

## Recombinant Mouse CD3E & CD3D protein, hFc-tagged

**Cat. No.** CD3E & CD3D-401M    **Lot. No.** (See product label)

### SPECIFICATION

<b>Product Overview</b>	Recombinant Mouse CD3E&CD3D Protein is expressed from mammalian with a hFc Tag at the C-terminal It contains Asp23-Asp108 (P22646) & Phe22-Ala105 (P04235).
<b>Species</b>	Mouse
<b>Source</b>	HEK293
<b>ProteinLength</b>	It contains Asp23-Asp108 (P22646) & Phe22-Ala105 (P04235).
<b>Description</b>	T-cell surface glycoprotein CD3 epsilon & CD3 delta chain, also known as CD3E & CD3D , are single-pass type I membrane proteins. When antigen presenting cells (APCs) activate T-cell receptor (TCR), TCR-mediated signals are transmitted across the cell membrane by the CD3 chains CD3D, CD3E, CD3G and CD3Z. All CD3 chains contain immunoreceptor tyrosine-based activation motifs (ITAMs) in their cytoplasmic domain.
<b>Form</b>	Supplied as 0. 22um filtered solution in PBS (pH 7. 4).
<b>Molecular Mass</b>	The protein has a predicted MW of 36. 1 kDa (CD3E )and 35. 2 kDa (CD3D ). Due to glycosylation, the protein migrates to 50-65KDa and 40-50KDa based on Bis-Tris PAGE result.
<b>Endotoxin</b>	Less than 0. 1 EU per ug by the LAL method.
<b>Purity</b>	> 95% as determined by Bis-Tris PAGE; > 95% as determined by HPLC

 Tel: 1-631-559-9269    1-516-512-3133

 Email: [info@creative-biomart.com](mailto:info@creative-biomart.com)     Fax: 1-631-938-8127

 45-1 Ramsey Road, Shirley, NY 11967, USA

**Storage** The product should be stored at -70°C. Please do not repeated freeze-thaw cycles.

**Reconstitution** It is recommended that sterile water be added to the vial to prepare a stock solution of 0.2 ug/ul. Centrifuge the vial at 4°C before opening to recover the entire contents.

## GENE INFORMATION

**Gene Name** Cd3e CD3 antigen, epsilon polypeptide [ *Mus musculus* ]

**Official Symbol** CD3E; CD3D

**Synonyms** CD3;CD3D;CD3-DELTA;T3D;CD3E

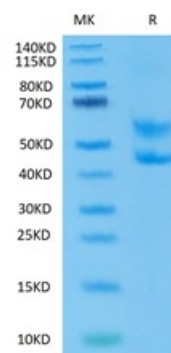
**Gene ID** 12501

**mRNA Refseq** NM\_007648

**Protein Refseq** NP\_031674

**UniProt ID** P22646

### Tris-Bis PAGE



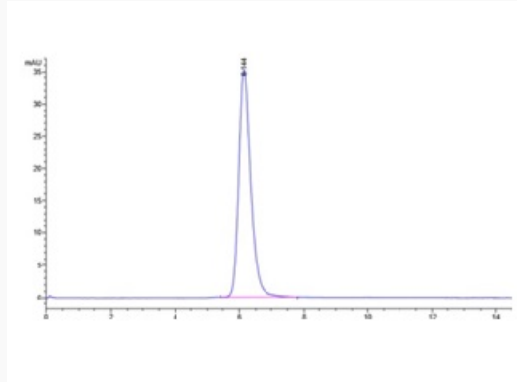
 Tel: 1-631-559-9269 1-516-512-3133

 Email: [info@creative-biomart.com](mailto:info@creative-biomart.com)  Fax: 1-631-938-8127

 45-1 Ramsey Road, Shirley, NY 11967, USA



HPLC data



Tel: 1-631-559-9269 1-516-512-3133

Email: [info@creative-biomart.com](mailto:info@creative-biomart.com) Fax: 1-631-938-8127

45-1 Ramsey Road, Shirley, NY 11967, USA